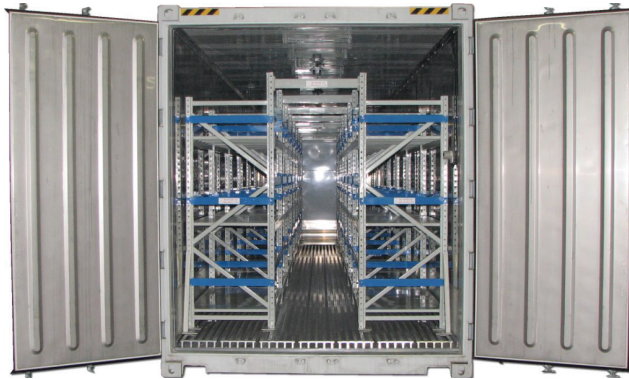




SEA BOX®

40' X 9' 6" Refrigerated ISO Cargo Container



STANDARD PRODUCT FEATURES

- Stainless steel interior wall lining
- Double swing doors on one end
- Aluminum T-grade floors
- Carrier (Model #69NT-40-541-300):
Dual Voltage 208/230, 380/460 Volts AC, 3 phase, 50 or 60 cycle
- Temperature range from -20° F to 70° F
- Interior light with switch
- Full length shelves on both sides

ALL NEW CONTAINERS ARE MANUFACTURED TO THE LATEST ISO STANDARD FOR NINE (9) HIGH STACKING

	LENGTH		HEIGHT		WIDTH		DOOR OPENING	
	Exterior	Interior	Exterior	Interior	Exterior	Interior	Height	Width
Ft in	40' 0"	38' 0 3/4"	9' 6"	8' 5 3/4"	8' 0"	7' 6 1/8"	8' 5 1/8"	7' 6 1/8"
Metric	12,192	11,602	2,896	2,585	2,438	2,290	2,569	2,290

	TARE WEIGHT	PAYLOAD	GROSS WEIGHT	CUBIC CAPACITY
Lbs	10,030	57,170	67,200	2,382 Cu. Ft.
Kgs	4,550	25,930	30,480	67.42 Cu. M.

ALL DIMENSIONS AND WEIGHTS ARE NOMINAL AND SUBJECT TO MINOR VARIATIONS THAT MAY OCCUR DURING THE MANUFACTURING PROCESS

SB561-9-SW-FLS
40' X 9' 6" Refrigerated ISO Cargo Container

122618-R00

ISO 9001



CERTIFIED QUALITY
MANAGEMENT SYSTEM