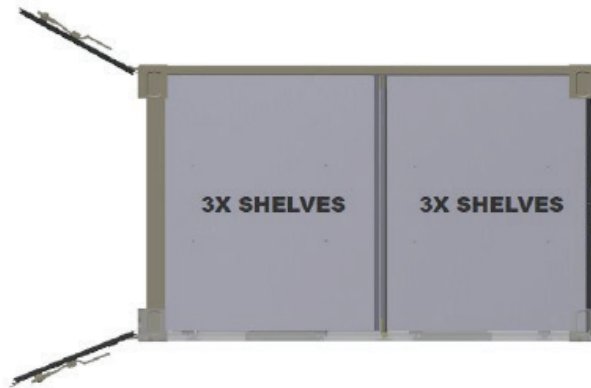
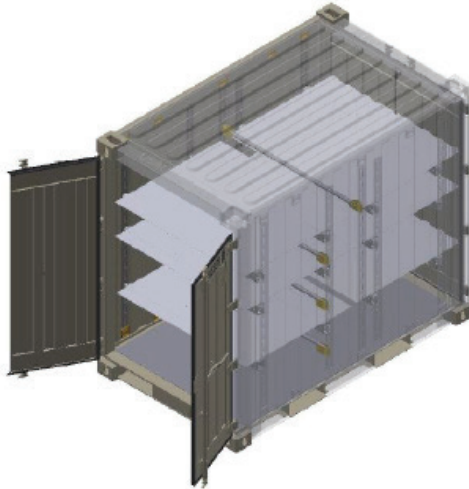




Quadcon (Type 2) ISO Container with 6 Adjustable Shelves

SB812.SH3+3
Quadcon (Type 2) ISO Container
with 6 Adjustable Shelves

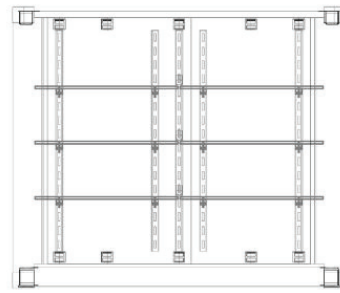


STANDARD FEATURES

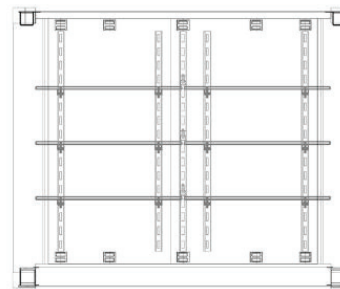
- Corrugated steel sides, roof + swing doors on both sides
- Heavy duty steel floor
- Four-way fork lift pockets
- (10) Columns of Vertical E-Track
- (20) Tie Down Rings - (10) bottom row and (10) top row
- (2) SB2343A Aluminum Manifest Holders
- Data Plate with NSN & UID Label
- (3) SB2341: Horizontal Twistlocks with
(1) SB2342: Storage Bracket
- Standard Tan

CUSTOM FEATURES

- (6) Adjustable Shelves. Includes:
 - - (6) SB3360: 1/2 Transverse Shelves (with Polyurea)
 - and (6) SB6000: Quadcon Load Bars
- - (6) SB3404 Light Duty Ratchet Strap
- - (6) SB3403 Light Duty Ratchet Strap w/ Loop
- 127 Sq. Ft. of Shelf Space
- 12 SB3422L Left Shelf Bracket
- 12 SB3422R Right Shelf Bracket



INTERIOR REAR END ELEVATION



INTERIOR FRONT END ELEVATION

033121-R00

SB812	LENGTH		HEIGHT		WIDTH		DOOR OPENING	
	Exterior	Interior	Exterior	Interior	Exterior	Interior	Height	Width
Ft. in.	57.44"	55.79"	82"	70"	96"	91.33"	71.18"	53.66"
Metric	1,459	1,417	2,083	1,778	2,438	2,320	1,808	1,363
	TARE WEIGHT		PAYLOAD		GROSS WEIGHT		CUBIC CAPACITY	
Lbs.	2,080		9,120		11,200		220Cu. Ft.	
Kgs.	944		4,136		5,080		6.22Cu. M.	

ISO 9001



CERTIFIED QUALITY
MANAGEMENT SYSTEM

ALL NEW CONTAINERS ARE MANUFACTURED TO THE LATEST ISO STANDARD

ALL DIMENSIONS AND WEIGHTS ARE NOMINAL AND SUBJECT TO MINOR VARIATIONS THAT MAY OCCUR DURING THE MANUFACTURING PROCESS

1 Sea Box Drive, East Riverton, NJ 08077-2022 | Phone: 856 . 303 . 1101 | Fax: 856 . 303 . 1501 | Email: sales@seabox.com

www.seabox.com | © Copyright 2020, Sea Box, Inc.