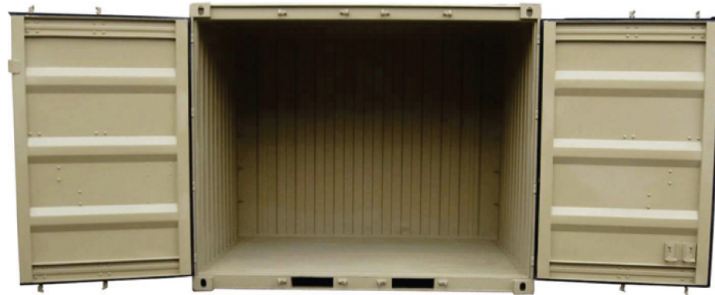




10' x 8'0" Bicon Dry Freight Container with Double Cargo Doors On 10' Side

SB843-0
10' x 8'0" Bicon Dry Freight Container
with Double Cargo Doors On 10' Side



PRODUCT FEATURES

STANDARD FEATURES

- Corrugated steel sides and roof
- (1) 14 gauge locking steel double swing doors on 10' side
- Steel floors, forklift tested to 16,000 lbs. per 44 square inches
- Tie down steel lashing rings, 4,000 lbs. cap. each
- (4) way forklift pockets
- Vents, (2) each

OPTIONAL FEATURES

- Connecting couplers, (2) per Bicon
- Connecting coupler storage bracket, (1) each
- Manifest box, (2) each
- Heavy duty adjustable shelving brackets (4) sets
- Decking and shoring beams, (16) each

091410-R00

ALL NEW CONTAINERS ARE MANUFACTURED TO THE LATEST ISO STANDARD

	LENGTH		HEIGHT		WIDTH		DOOR OPENING	
	Exterior	Interior	Exterior	Interior	Exterior	Interior	Height	Width
Ft in	9' 9 3/4"	9' 3 1/2"	8' 0"	7' 5 1/64"	8' 0"	7' 8 17/32"	7' 6"	9' 5 1/2"
Metric	2,991	2,832	2,438	2,261	2,438	2,350	2,286	2,883

	TARE WEIGHT	PAYLOAD	GROSS WEIGHT	CUBIC CAPACITY
Lbs	3,000	13,000	16,000	517 Cu. Ft.
Kgs	1,361	5,897	7,258	15.9 Cu. M.

ALL DIMENSIONS AND WEIGHTS ARE NOMINAL AND SUBJECT TO MINOR VARIATIONS THAT MAY OCCUR DURING THE MANUFACTURING PROCESS

ISO 9001



CERTIFIED QUALITY
MANAGEMENT SYSTEM